

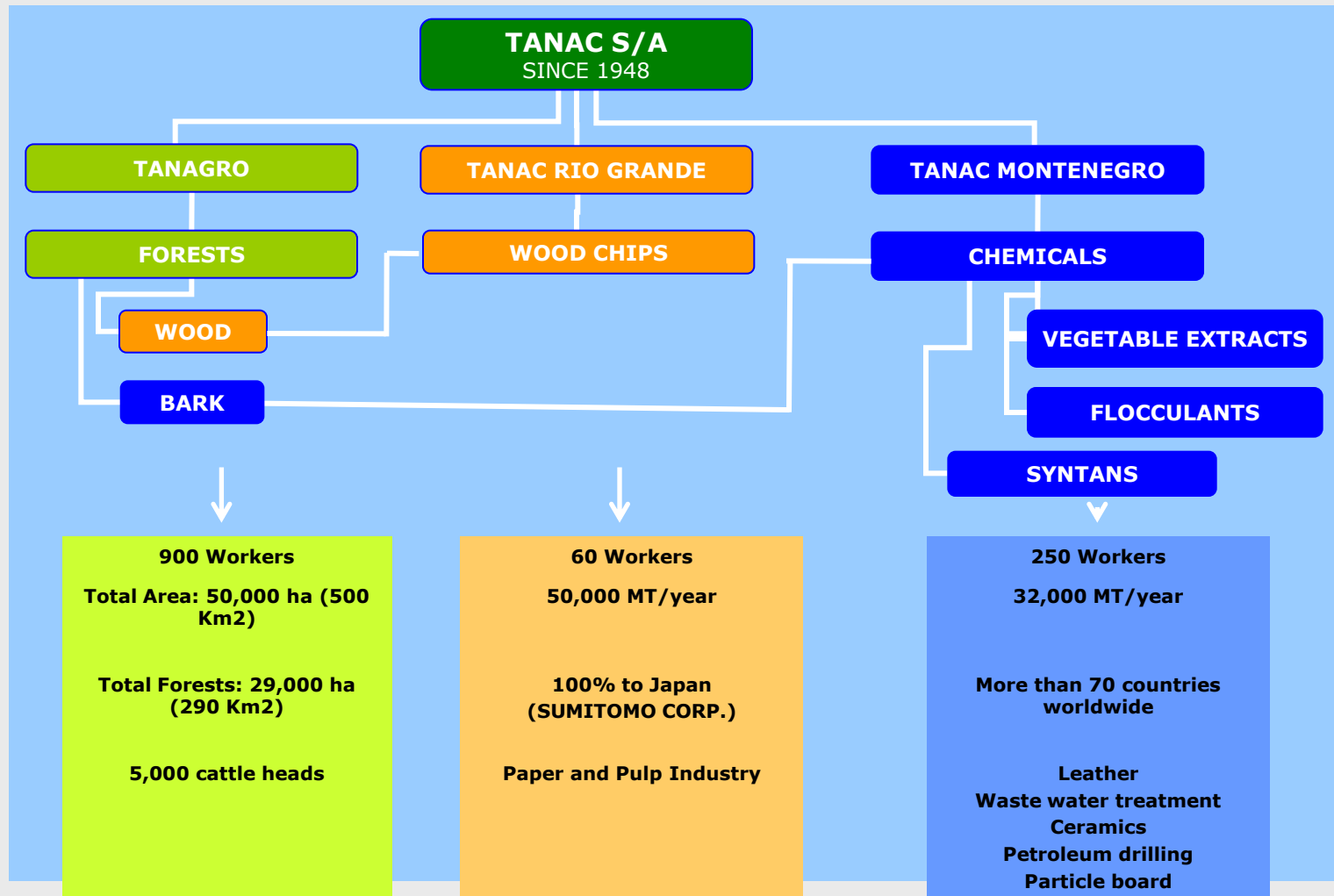
The background of the slide is a collage of four images. On the left, a close-up of a gloved hand holding a glass dropper with a red liquid. In the center, a row of vertical tubes in various colors (blue, white, yellow, orange). On the right, a complex industrial machine with many pipes and valves. At the bottom center, a large industrial machine with a green floor.

MIMOSA VEGETABLE EXTRACTS

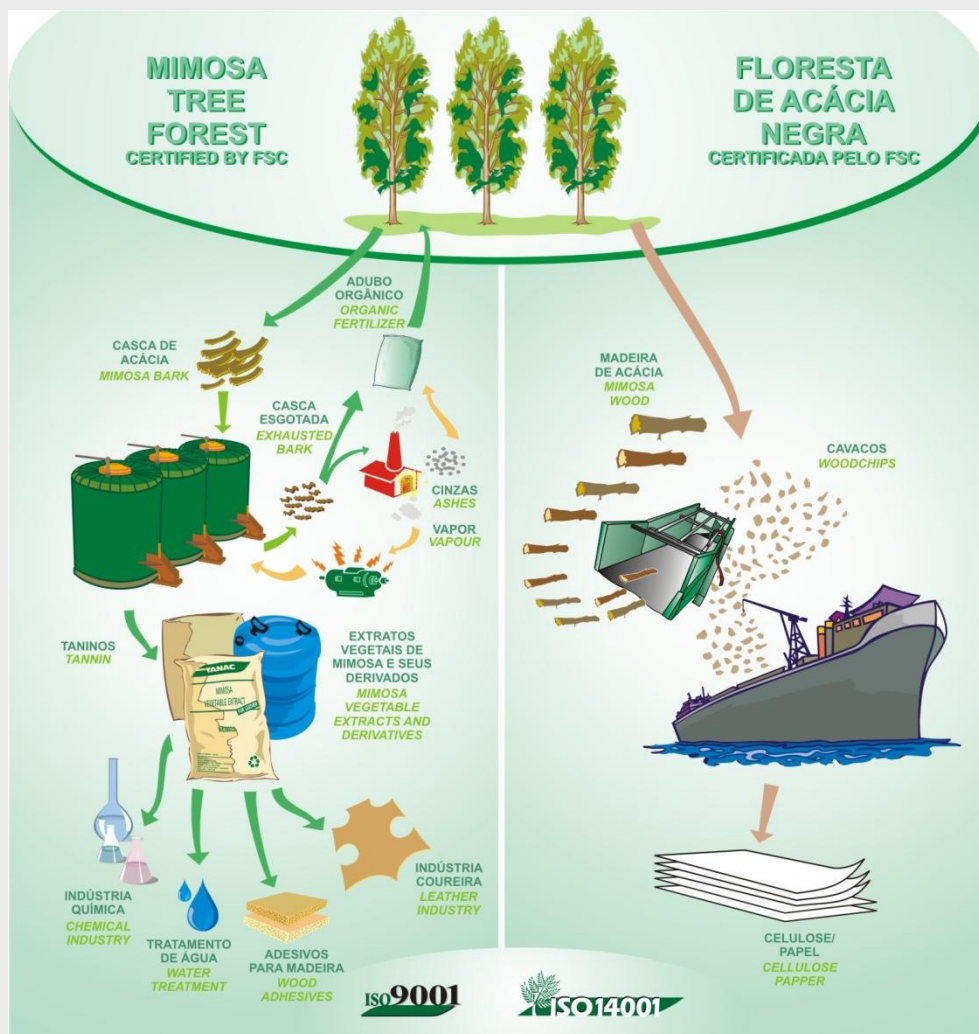
WELCOME

***EXPORT DEPT
TECHNICAL DEPT
RESEARCH & DEVELOPMENT DEPT***

TANAC S.A.



TANAC S.A.



TANAC S.A.



OUR BUSINESS

TANAC is based in Brazil (South America) and for 68 years we have been producing and exporting vegetable extracts all over the world.

Our business are composed by four divisions:



LEATHER CHEMICALS



**VEGETABLE EXTRACTS
SYNTANS**



WASTE WATER TREATMENT → TANFLOC



WOODCHIPS



AGROBUSINESS



TANAC S.A.



FOREING TRADE

TANAC is present in more than **75 countries** around the world.

In the five continents our customers can account with the quality of our products and services through our high qualified Agents/Distributors network.



TANAC S.A.



VEGETABLE **TANNINS**

Vegetable tannins are obtained from the bark, wood, roots, leaves, fruits and growths of certain plants.

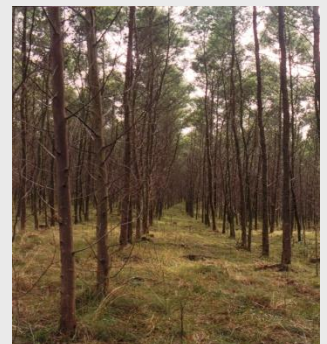
In 1920, Freudenberg has classified it by chemical origin in two types:



**PYROGALLIC or
HYDROLIZING**



**PYROCATECHINIC or
CONDENSED**



TANAC S.A.



VEGETABLE **TANNINS**

Vegetable tannins
are found in many
places around the
world.



⇒ **MIMOSA**

⇒ **CHESTNUT**

⇒ **MANGROVE**

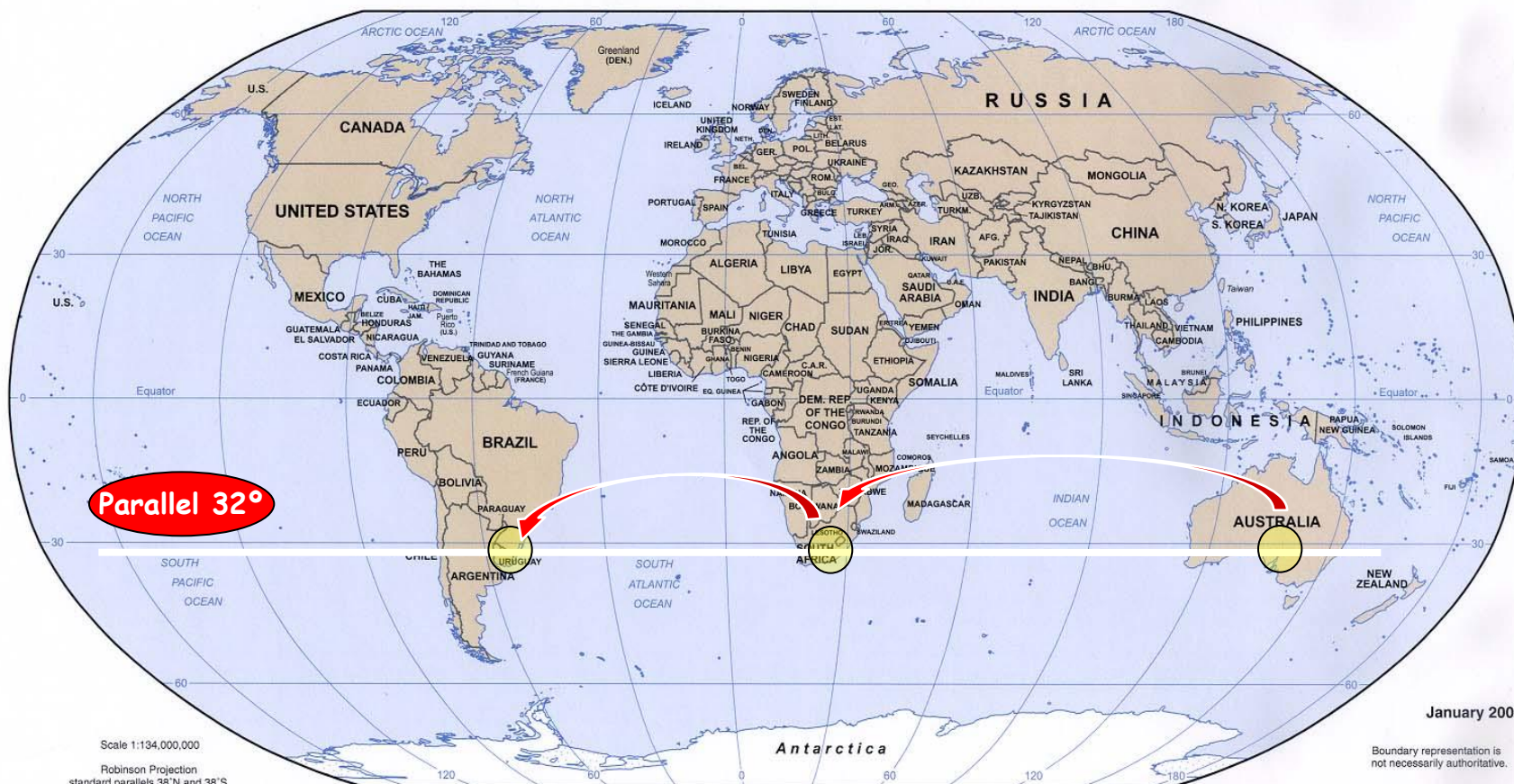
⇒ **MIRABOLAN**

⇒ **QUEBRACHO**

⇒ **TARA**

⇒ **VALONEA**

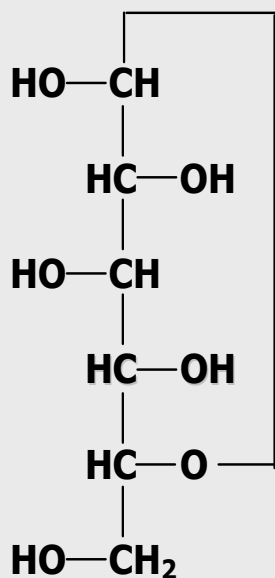
TANAC S.A.



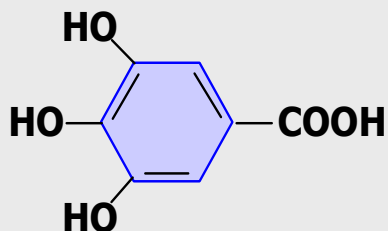
TANAC S.A.



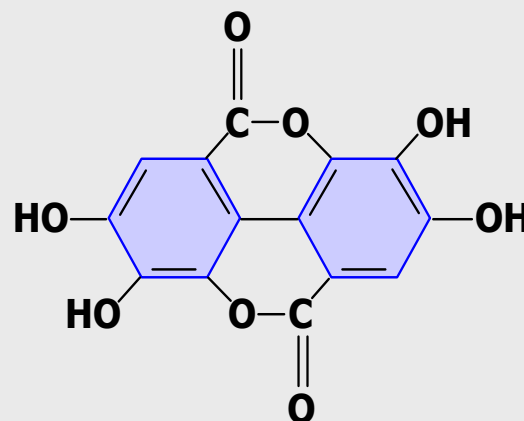
PYROGALLIC or HYDROLIZING



GLUCOSE



GALIC ACID



ELAGIC ACID

TANAC S.A.



PYROGALLIC or HYDROLIZING



Chestnut

(wood)



Tara

(fruit)



Valonea

(fruit)



Mirabolan

(fruit)



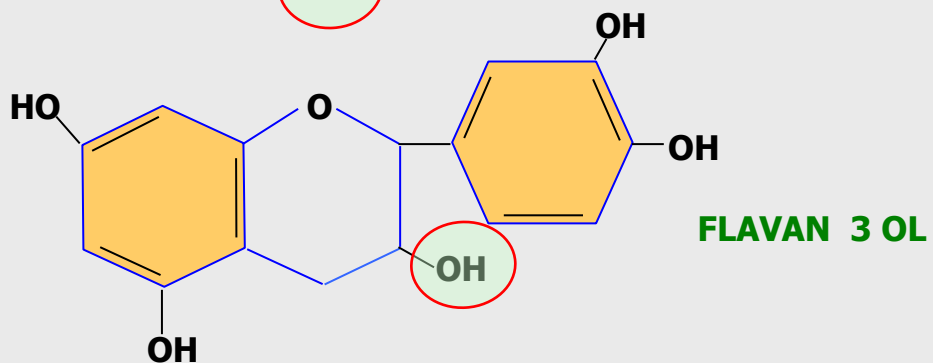
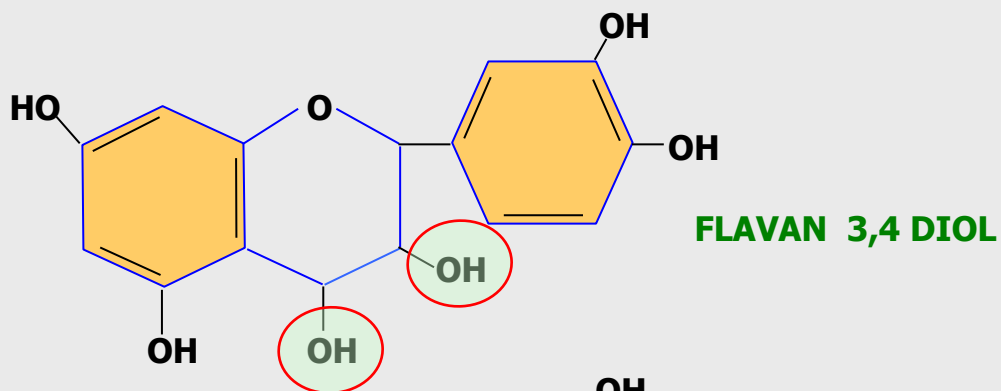
Oak

(wood)

TANAC S.A.



CATECHINIC or CONDENSED



TANAC S.A.



CATECHINIC or CONDENSED



Mimosa

(bark)



Quebracho

(wood)



Mangrove

(bark)



Gambir

(leaves)



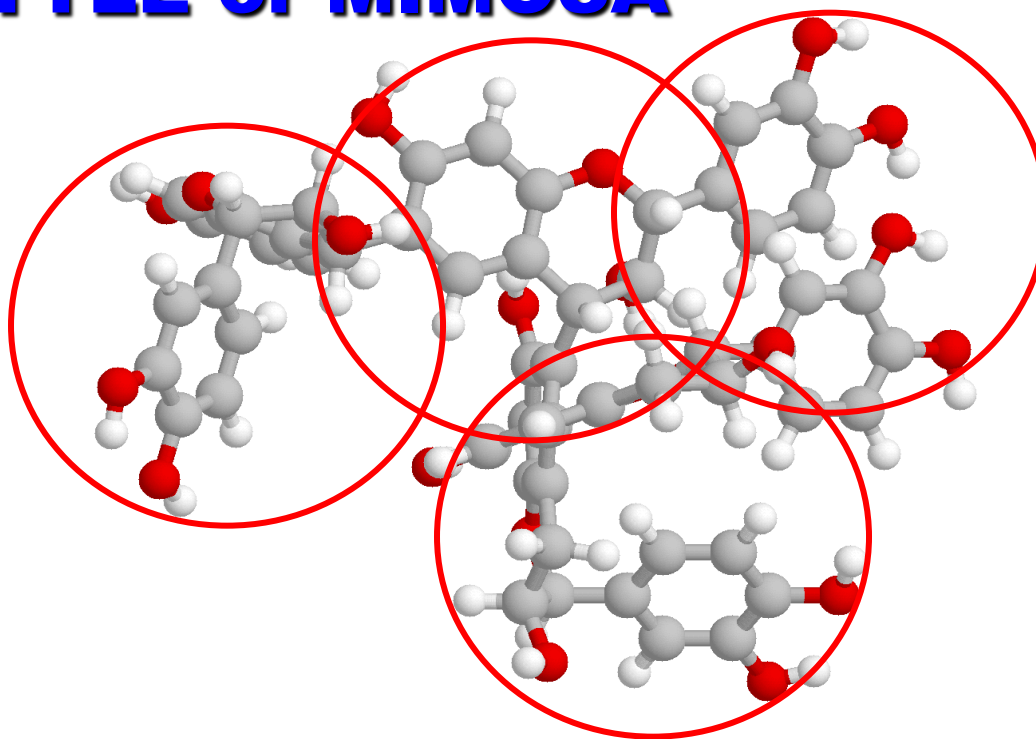
Oak

(bark)

TANAC S.A.



POLYMERIC STRUCTURE OF WATTLE or MIMOSA

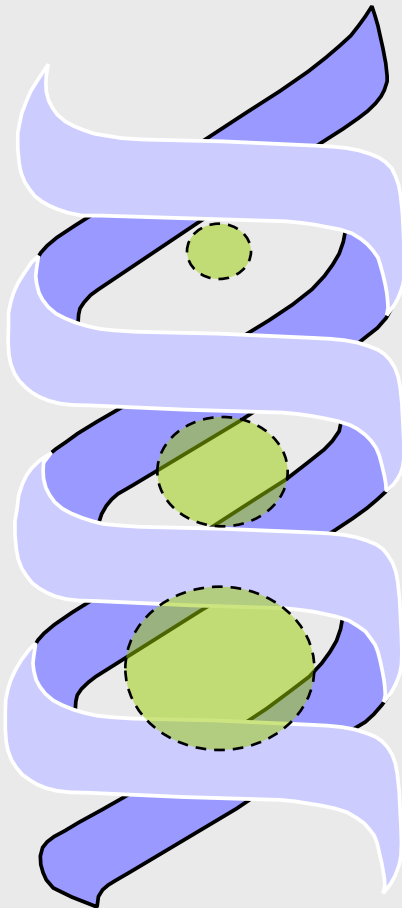


Molecular weight around 1.000

TANAC S.A.



MAIN VEGETABLE TANNINS CONTENTS



NO TANNINS (Molecular weight < 500)



TANNINS (Molecular weight between 500 and 3.000)

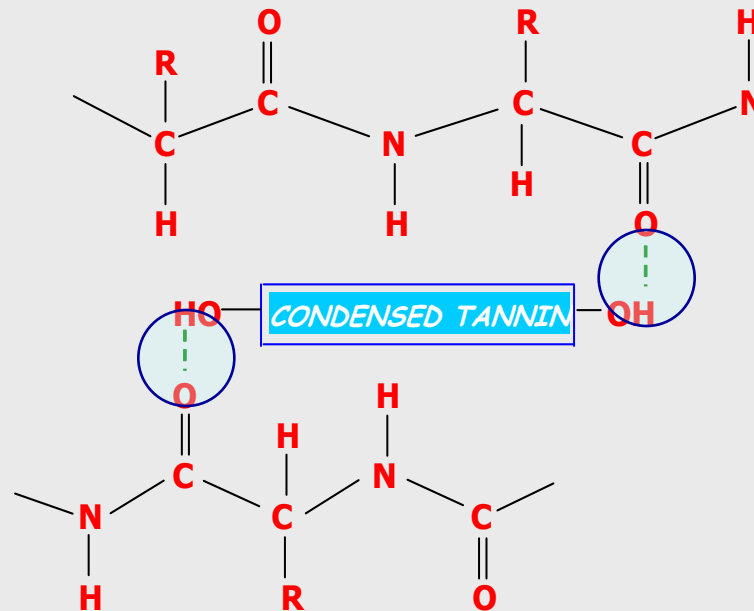


INSOLUBLES (Molecular weight > 3.000)

TANAC S.A.



THE REACTION WITH THE COLAGEN



TANAC S.A.



CHEMICAL **MODIFICATIONS**

Some of our products are chemically modified in order to create some special characteristics not found in the normal mimosa extracts.



Some of these characteristics obtained are:

- ☺ **Higher temperature resistance**
- ☺ **Higher tear strength**
- ☺ **Higher waterproofing properties**
- ☺ **Maintenance the chrome leather characteristics**
- ☺ **Excellent weight yield**
- ☺ **More fullness**

TANAC S.A.



VEGETABLE EXTRACTS

WEIBULL BLACK

WEIBULL SOLID C

WEIBULL

**MIMOSA ONCA
SOLID WATTLE**

SUPERTAN

**MIMOSA LEOPARD
SOLID WATTLE**

CLAROTAN

CLAROTAN X-8

WEIBULL EXTRA LIGHT



TANAC S.A.



MODIFIED EXTRACTS

WEIBULL ROY

**WEIBULL ROY
SPECIAL**

WEIBULL LAB

SOFTANNIN

WEIBULL AUTO

SUPERTAN FX

**MACROSPEC
PRE-TAN**

WEIBULL VG Liq.



TANAC S.A.



SYNTANS

SYNTAC CW

SYNTAC F

SYNTAC FL

SYNTAC NN

SYNTAC 54

SYNTAC RIF



TANAC S.A.



AUXILIARIES

MACROSPEC IS

SYNTAC IS



TANAC S.A.



WEIBULL

- Natural mimosa extract for general usage
- This traditional extract has uniform quality being ideal for pit, pit-drum or drum tanning processes
- In the retanning process, **WEIBULL** improves the flanks and belies filling
- Fine and tight grain



TANAC S.A.



WEIBULL **EXTRA LIGHT**

- **High bleached extract for general usage, specially developed to very light colour leathers**
- **WEIBULL EXTRA LIGHT has very good filling properties**
- **The most interesting products for goat and buffalo calf vegetable tanning**
- **Ideal for softy leathers**



TANAC S.A.



WEIBULL AUTO

- **Modified extract with light and heating resistances**
- **WEIBULL AUTO has specially properties for *AUTOMOTIVE LEATHERS***
- **In the retanning process, keep the printing and buffing properties**



TANAC S.A.



SOFTANNIN

- Polymeric agent with high softening effect
- **SOFTANNIN** reacts deep on the fibres improving the exhausting of the fatliquors and reducing the COD level on the residual floats.
- The usage of **SOFTANNIN** imparts in low cost process by reducing energy and water consumption.



TANAC S.A.



WEIBULL ROY **SPECIAL**

- **Modified Mimosa that confers a special consistence to the leather grain and enhance the leather buffing and embossing procedures.**
- **WEIBULL ROY SPECIAL promotes short and compact fibres on splits.**
- **Higher light and temperature resistance than the normal mimosa.**



TANAC S.A.



WEIBULL ROY

- **Astringent vegetable extract with high tannin content**
- **When used in *Sole leathers*, WEIBULL ROY promotes an exceptional fullness, with excellent weight yield**
- **In waterproofing processes, WEIBULL ROY increase the hydrophobic character as well as fine and firm grain**
- **Buff, polish and burnish effects are improved by using WEIBULL ROY**
- **High iron resistance when compared with Pyrogallic Tannins**



TANAC S.A.



WEIBULL LAB

- High tannin content vegetable extract
- When used in *retanning processes*, **WEIBULL LAB** promotes an excellent fullness, with fine and firm grain
- Buff, polish and burnish effects are improved by using **WEIBULL LAB** in high quantities.



TANAC S.A.



WEIBULL CW

- **A special compound of polymer-synatan agents, indicated for dark shades with significant costs reduction**
- **Gives a good filling properties and fast penetration**
- **Helps fatliquoring absorption, improving the expected softness**



Thank you!

www.tanac.com.br

